



STEWART™

A GOOD WALK PERFECTED™

2025





1. ABOUT US

Before we talk about the features and benefits of our machines, it's important that we talk about our guiding beliefs and principles when it comes to golf, and how this shapes our approach to product design and engineering.

Ultimately, it's about the best golfing experience possible. A good walk perfected, if you will...



THE ORIGINALS

Engineers have innovation coursing through their veins, always questioning, always curious and always looking for better.

With more than 140 years of engineering experience between them, David Funnell, Ross Stewart, Jon Miller & Mark Stewart began work on the original 'carousel' design over 20 years ago, which led to the first Stewart trolley release in 2003.

They have been creating, innovating and pushing boundaries every day since, and have no plans to stop any time soon.



EVERY ELECTRIC TROLLEY WE HAS EVER MADE HAS BEEN BUILT IN GREAT BRITAIN

As an engineering-founded, owned, and run company, designing and manufacturing is in our very nature. In an era when it appears that every product is imported from an anonymous factory in the far east, it was always our goal to build our machines in Great Britain.

The model was Mark Stewart's reaction to the assumption that everything was made in China. The Union Jack machine was the centrepiece of our golf show stands for many years.

Emphasising our British roots has become increasingly relevant as Stewart Golf has grown from a small workshop to a globally recognised brand.

It's more than just where we're from, it's a reflection of how we design, build, and support our products. Every trolley that leaves our Gloucestershire headquarters carries with it a legacy of British engineering, craftsmanship, and innovation.



CREATED BY STEWART GOLF STARRING SAM TORRANCE

FOR THE WALKERS



FOR THE WALKERS

Golf is a pure sport, essentially unchanged for hundreds of years. Golf has always been a walking game, and walking remains the best way to experience the course.

In our short film 'For The Walkers', Sam Torrance states that "golf's beauty can lie in the time between shots", and walking handsfree down the fairway is the epitome of this idea.

Watch the video on [YouTube now.](#)



1. ABOUT US

2. TROLLEYS

3. ACCESSORIES

4. DESIGN

OUR PRINCIPLES & HERITAGE

Built on a proud family heritage, Stewart Golf has spent over 20 years at the forefront of innovation and excellence in the golf industry.

Renowned for pioneering technology and exceptional craftsmanship, our third-generation family business continues to set the standard for electric golf trolleys worldwide.

It all began back in 1999, when three generations of the Stewart family turned their attention to electric golf trolleys and saw an opportunity to do things differently.

Most on the market were 'single motor' machines that meant that the golfer was effectively tethered to them; constantly adjusting speed and direction, and walking back and forth to it at every green and tee box.

The other issue was that the category was viewed as more of a disability aid than a performance tool. A basic tubular frame + big battery + motor does not add up to a desirable product easily.

Our design principles were clear:

1. PERFORMANCE:

Design a focused, remote control FIRST machine that has on course performance at it's core. Everything we design should be helping to provide a better experience for the golfer.

2. AESTHETICS:

Make it look fantastic. The test is always; would someone look at a Stewart machine and think it looked cool, before knowing what it does?

Even after 25 years, those ideals remain at the centre of our DNA. Following these ideas, we make different design decisions than others on the market, but we do so purposefully and shamelessly to provide the finest golfing experience.



Mark & Ross Stewart

2. TROLLEYS

THE Q FOLLOW

The combination of Follow and Remote is key to the perfect round of golf. Use Follow for the fairways and Remote when in the rough or around the greens.

REMOTE CONTROL

Although it's called the Q Follow, it is first and foremost an incredibly capable remote control machine with a 75m range. Speed it up or down, steer it left or right, even reverse it if you need to. You can also program two 'cruise control' set speeds.

FOLLOW

To engage Follow, simply stand at the front of the trolley and press the green 'Follow' button. Then clip the handset to your pocket or belt and walk away. The Q Follow will remain approximately 2m behind you. You can override Follow by starting to use remote, or by pressing stop to 'cancel' Follow.

CHOOSE WHICH YOU USE

We recommend that Follow is best used on the fairway, where there are no obstructions to navigate around. It's easy to switch between Remote and Follow, so choose the option most appropriate at the time.



"The Stewart Golf Q Follow is the very definition of a meaningful innovation. Once the handset was clipped to my belt, I forgot all about it and just played my game"

GolfDigest





Q FOLLOW LATEST FEATURES

75M REMOTE RANGE

The ultimate remote controlled golf trolley. With new 8th generation Follow technology and a 75m remote range, you've got the freedom to focus entirely on your next shot.

INTERGRATED MOUNTING PLATE

Equipped with a new integrated mounting plate, for magnetic range finders and devices, keeping your gear exactly where you need it. The 2025 Q Follow is your all in one robotic caddie.

8TH GENERATION FOLLOW TECHNOLOGY

Since its introduction in 2014, our proprietary Follow system has gone from strength-to-strength. Every system is graded, assembled and tuned at the factory.

SMARTPOWER BATTERY

Greater efficiency provides you with increased longevity, while using less energy. Plus, with our new mobile app, you can keep track of exactly how much power each round is using.





THE VERTX REMOTE

"If you want the best all round remote experience, it has to be the Stewart Golf VERTX"

Golf Monthly

Built from the ground up, the VERTX Remote is a new breed of golf trolley, one with absolute focus, ability, and power.

Designed to give you control like no other, it's your key to playing with confidence from tee to green.

With over two years of development, the VERTX redefines performance through groundbreaking remote technology, delivering a seamless, powerful experience that enhances your game every step of the way.

With the complete remote experience at your fingertips, you're attached to the game, not your bag. No limits, and no compromises.

The VERTX is more than a trolley. It's the next step in your journey to total on-course freedom.

5S WHEELS & DRIVE SYSTEM

The VERTX wears new '5S' wheels to make it stand apart from the Follow.

The new wheels are mated to a re-designed drive system that has shorter axles for an even smaller size when the wheels are removed.

ACTIVE TERRAIN CONTROL (ATC)

The unique electronics system fitted to the VERTX Remote is built around patented Stewart Golf ATC technology.

A world-first, this machine adjusts its power delivery 1,000 times per second to manage the terrain and maximise performance on all gradients.

When going down hills, the VERTX actively feeds power back into the battery, therefore adding to your range.

ALL NEW CORTEX CHIP

The most powerful chip ever fitted to a remote control golf trolley. The Cortex chip facilitates the ATC system for unrivalled control.

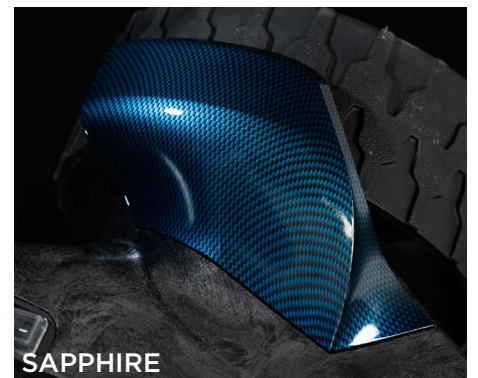
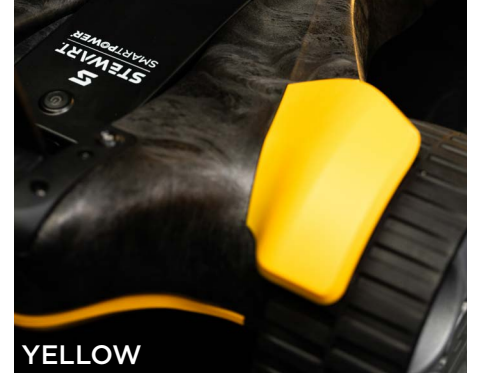


DESIGN SERIES

The Q Follow and Vertx Remote are now available in **twelve** bold new accent colours, giving you more ways than ever to personalise your trolley to suit your unique style.

Whether you're representing your favourite team, coordinating with your go-to golf shirt, or simply standing out for all the right reasons, the Design Series lets you make a statement with every round.

On the Q Follow, the new finishes are on the wheel arches, undertrays, spine and handle brace. Vertx Remote buyers will also have the new finish on each spoke of the 5S wheels.



SPECIFICATION LIST



Q FOLLOW



VERTX REMOTE

Follow Functionality



Active Terrain Control (ATC) System



Compact Folding Chassis



Patented Auto Folding Stabiliser



Single or Two-Handed Lift



Base or Max Battery Options



Cable Free Battery Connection



Dual Front Wheels



Integrated Scorecard Holder



Umbrella Stand Mount



4 Accessory Points



Handset Cradle on handle



Rechargeable Bluetooth Handset



Remote Control Range



Two Or More Cruise Control Speeds



2 Year Warranty



Optional Third Year Warranty



3. ACCESSORIES

THE NEXAS HYBRID BAG

Designed for golfers who demand flexibility, the NEXAS Hybrid Bag introduces a lowered stand mechanism and flex foot base system with integrated bag key, for a perfect fit to the Q Follow and Vertx Remote.

Whether carried with its quick release equilibrium straps or secured to a trolley, the NEXAS delivers exceptional balance and comfort.

Features include:

- Hybrid Stand & Cart Bag Design
- Lowered Stand Mechanism
- Flex Foot Base System
- Quick Release Equilibrium Straps
- Velour Lined Valuables Pocket
- 14-Way Full Length Dividers
- Magnetic Range Finder Pocket
- Tour Grade Synthetic Leather
- Genuine Leather Handle



THE NERO 2 CART BAG

The NERO 2 Cart Bag is crafted from the finest materials for a luxurious and premium finish.

Setting new standards in both form and function, the NERO 2 embodies all the qualities to partner Stewart's award-winning golf trolleys.

The Stewart Golf NERO 2 is meticulously designed, and it boasts an impressive array of features to enhance every golfer's experience.

Features include:

- Tour-Grade Synthetic Leather
- 9.5" 14 Way Top with Easy Lift Carry Handles
- 9 Individual Pockets, incl. 2x Plush Velour-Lined & 1x Magnetic Rangefinder Pocket
- Built-In Rain Cover
- Padded Shoulder Strap & Holster
- Polished Aluminium Clip
- Full Length Umbrella Sheath
- Velcro Rain Hood Attachment
- Customisable Zipped Front Panel

TROLLEY ACCESSORIES

TRAVEL BAG

Designed to allow lifting from the handle of the trolley, as well as to allow moisture to escape from the opening at the top of the bag.



Umbrella Holder
(Adjustable)



Umbrella Holder



UV Umbrella



Insulated Bottle
Holder



Phone Holder



Golf Ball Holder



Rain Cover



Drinks Holder



Q Follow Winter Wheels



VERTX Winter Wheels



Cooler Bag



Accessory Clips



Sand Bottle



Head Cover Set



Microfibre Magnetic Towel

4. DESIGN HIGHLIGHTS

The Q Follow and VERTX Remote share a chassis and main design principles. This section will highlight what they are, and why they are important.

COMPACT FOLDING CHASSIS

The chassis folds and unfolds in just a few simple steps. It can stand up straight to take up minimal floor space, or lie down flat. You can lift with one hand from the central handle, or from either end with both hands.

Folded size is a big plus, making it perfect for customers with small cars (e.g. Porsche 911).



AUTOMATIC STABILISER

A rear stabiliser is a critical part of the design, too important to rely on the user remembering to fold it out manually.

That's why our patented mechanism deploys it automatically when the machine is unfolded, so the customer never has to think about it.



SMARTPOWER BATTERY

Our electric trolleys are available with two SmartPower battery options: BASE, designed for up to 18 holes, and MAX, built for up to 36 holes on a single charge.

The FREE SmartPower App gives you a detailed picture of energy consumption during and after your round, and will tell you how long it will take to charge your battery.

Notice how the battery is long and thin? That's intentional. It allows us to position the battery as far forward as possible within the chassis, helping to shift the centre of gravity for improved balance and handling.



RECHARGABLE HANDSET

The compact remote control handset can be recharged using the supplied USB cable.

Customers should ONLY use this cable to ensure the correct charging voltage is used.



BAG TYPE AND WEIGHT

We have designed the product with a 14kg cart or tour bag in mind.

Stand bags mostly don't fit very well on to trolleys, and their light weight and high centre of gravity will reduce stability and increase steering speeds.

We have created the NEXAS Hybrid bag for customers who want the flexibility of being able to carry occasionally.



MULTI FUNCTION HANDLE

As well as a scorecard and pencil holder, the handle houses four accessory points for various accessories, a central point for an umbrella stand and a cradle for the remote control.



FIXED DUAL FRONT WHEELS

Dual front wheels add to the stability of the machine by increasing its footprint. Swivel front wheels can be better for tight manoeuvres, but 99% of golf course use is roughly walking in a straight line. A swivel front wheel will naturally want to 'fall' down any slope, but fixed wheels provide a consistent and reliable path.



FAQs

DEMONSTRATION BEST PRACTICE

Whilst it is easy to explain the folding, unfolding and features of the Q Follow and VERTX in store, it is hard to fully demonstrate indoors.

Try to get outside where you have open space, a car park or grassy area is ideal. Always demonstrate with a full set of clubs fitted as this will show the steering speeds as they are designed.

Note that items that create electrical noise such as sliding doors could interfere with the follow system.



WHAT KIND OF GOLF BAGS WILL FIT?

The VERTX & Q Follow have been designed for use with Cart or Tour Bags that weigh 14kg.

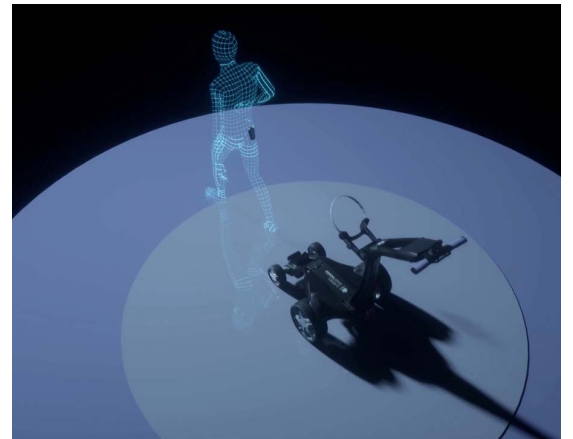
We generally don't recommend Stand Bags to be used (except our NEXAS Hybrid). This is partly because their leg mechanisms often won't fit the bag stays very well, but mainly because they tend to be much lighter than 14kg and are top heavy, which will make the steering faster than designed.



HOW DOES THE FOLLOW SYSTEM WORK?

The red components under each wheel arch house a pair of electromagnets, which create two electromagnetic fields around the machine. The first is approximately 1m in radius, and when the handset is inside this then the trolley will remain stationary. We call this the **'neutral zone'**.

The second zone is from 1m to approx 3m, which is the **'active zone'**. When the handset is in this zone, the trolley will move automatically until the handset is back to 1m and directly in front of the trolley.





POSSIBLE OBJECTIONS

FOLLOW SIGNALS

If you have more than one Follow in a group, it's possible for them to interfere with one another in some circumstances. If Follow is activated within 5m of another Q Follow, it could cause the trolley to stop. Just make sure Follow is activated 5m or more away from other machines and there should not be any issues.

It's a 'follow' trolley, not a 'find' trolley. Always start Follow stood in front of the machine, less than 1m away, then walk away in the direction it's facing.

WHY CAN'T I CLAMP MY UMBRELLA?

The umbrella stand has been designed for somewhere to place your umbrella while you're playing a shot.

It is not recommended to leave in there while the buggy is in motion for 2 reasons; the first is that it could be a safety hazard as it may blow over and damage the product or life; and second it means that you'll be tethered to the machine which is not the experience we want customers to have.

WHERE'S THE GPS?

Customer research shows that the majority of golfers use a laser range finder or a GPS watch. We don't feel that we will offer a better or more accurate solution than Garmin or Bushnell, so we focus on the performance of our machines.

NO MANUAL CONTROL?

We hate the idea of being tethered to a trolley, so our machines are focused 100% on Remote and Follow. This does mean that the golfer has to use the remote control for all powered functions of the machine, but if all else fails there is a freewheel position to push the trolley if needs be. Our biggest fear is that if we fit a manual control, someone will use it!



UK WHOLESALE DISTRIBUTION PARTNER

Specialist Sports Ltd
140 Mauretania Road
Nursling Industrial Estate
Southampton
SO16 0YS
United Kingdom



BY EMAIL

Trade Enquiries: sales@specialistsports.com

BY TELEPHONE

General enquiries: +44 (0) 2381 800 770

